

**TOWN OF INUVIK
BY-LAW #2593/P+D/16**

**A BY-LAW OF THE MUNICIPAL CORPORATION OF THE TOWN OF INUVIK IN THE
NORTHWEST TERRITORIES TO AMEND THE ZONING BY-LAW 2583/P+D/15**

WHEREAS pursuant to the provisions of the Community Planning and Development Act, S.N.W.T. 2011, c. 22 and subsequent amendments thereto;

AND WHEREAS the Town of Inuvik has enacted a Zoning By-law 2583/P+D/15;

AND WHEREAS it is now deemed desirable to amend the Town of Inuvik Zoning By-law 2583/P+D/15 to allow for rezoning of a specific property;

NOW THEREFORE BE IT RESOLVED that the Council of the Municipal Corporation of the Town of Inuvik in Council duly assembled enacts as follows:

That **Lot 1019, Quad 107 B/7, Plan 3030** be rezoned from **H – Hinterland Use Zone** to **ST – Science and Technology** in the Zoning By-law 2583/P+D/15 and its Zoning Map, Schedule “C”:

1. That the by-law be amended to reflect this change.
2. That the Community Plan map be amended to show the properties described above as “Science and Technology”.
3. This by-law shall come into effect on the date of its final passage.

READ A FIRST TIME THIS 11TH DAY OF MAY, 2016 A.D.



MAYOR



SENIOR ADMINISTRATIVE OFFICER

After due notice and a Public Hearing:

READ A SECOND TIME THIS 22ND DAY OF JUNE, 2016 A.D.



MAYOR



SENIOR ADMINISTRATIVE OFFICER

READ A THIRD TIME AND FINALLY PASSED THIS 14TH DAY OF SEPTEMBER,
2016 A.D.

MAYOR

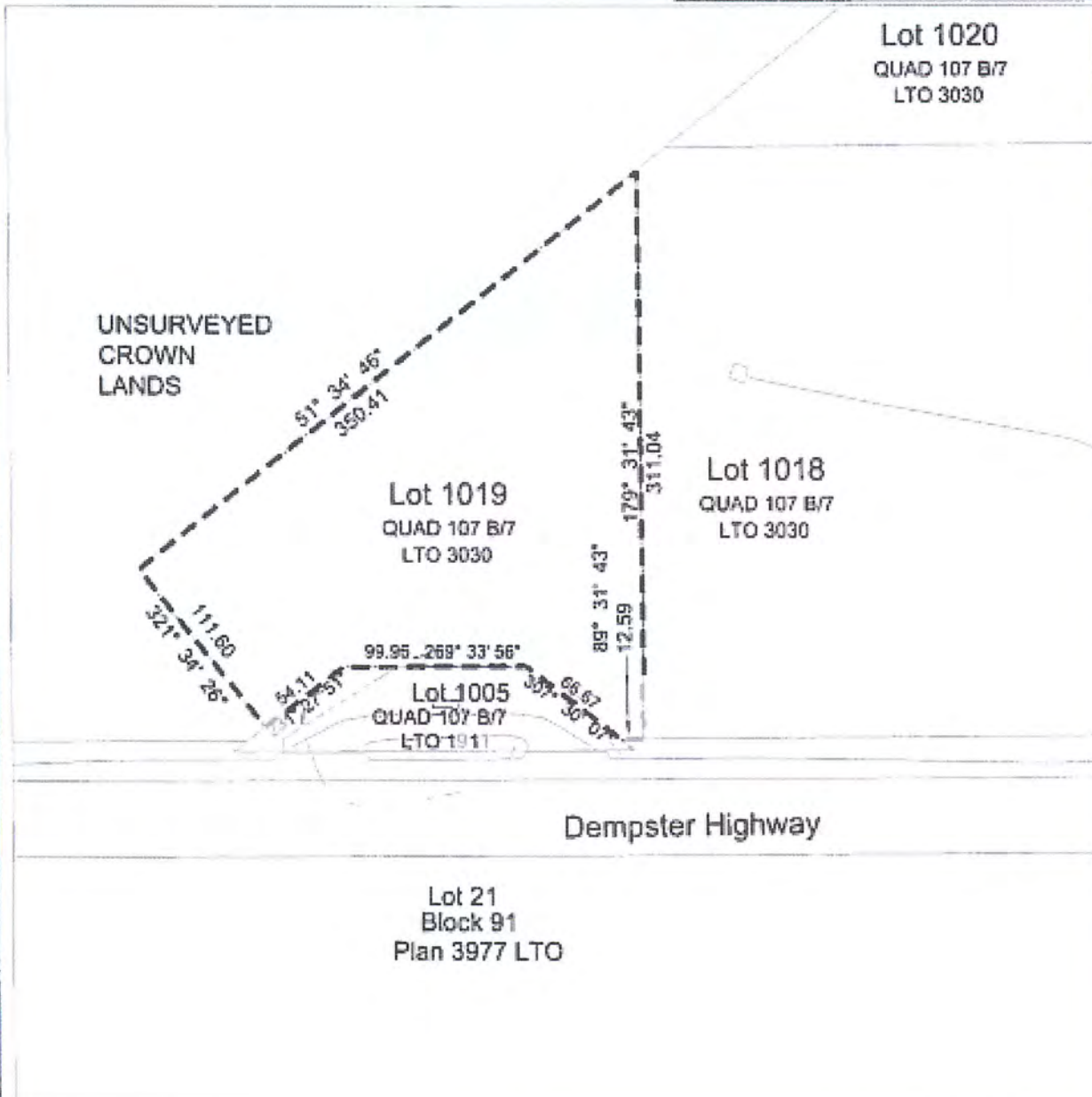
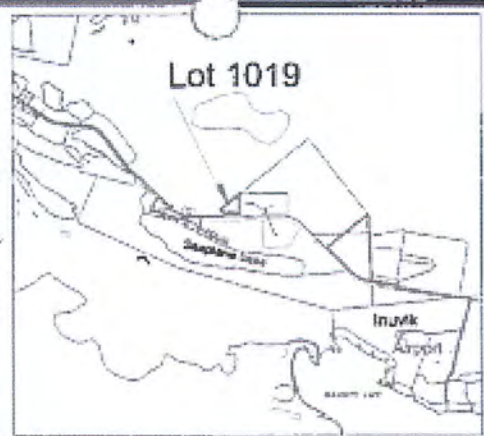
SENIOR ADMINISTRATIVE OFFICER

I hereby certify that this by-law has been made in accordance with the requirements of the Cities,
Towns and Villages Act and the by-laws of the Town of Inuvik.

SENIOR ADMINISTRATIVE OFFICER

SKETCH PLAN SHOWING
 Lot 1019
 Quad 107 B/7
 Plan 3030 LTO (80317 CLSR)
 INUVIK, NWT

SCALE 1 : 3000



Area of Lot 1019 = 4.64ha (±11.47 ac)

OWNER

H.M.C. Canada - Transport Canada
 No title issued.
 Administration transfer from DIAND to TC by
 Order in Council 1970-1219 dated July 8, 1970.
 Originally was described as Lot 5, Plan S0542
 CLSR (253 LTO)

PUBLIC WORKS AND GOVERNMENT SERVICES CANADA
 PROFESSIONAL & TECHNICAL SERVICES

(SHOWN OUTLINED WITH A HEAVY LINE)

**Lands Surplus to
 Transport Canada's Requirements**

AT
 INUVIK, NWT.

DRAWN: CCF FILE# 023185-003
 DATE Jan 17 2012 SCALE: 1 : 3000
 GEOMATICS SERVICES, EDMONTON, ALBERTA

E.3360b