

BY-LAW 259

A BY-LAW OF THE TOWN OF INUVIK IN THE NORTHWEST TERRITORIES TO
CLOSE THE ROAD ALLOWANCE BETWEEN LOTS IN BLOCK 58.

WHEREAS pursuant to the Municipal Ordinance by-Laws may be passed
providing for the closing of roads;

AND WHEREAS it is deemed expedient and necessary to consolidate Block
58;

AND WHEREAS pursuant to Section 151 of the said Ordinance of this
by-law, a copy of which notice is here appended as Schedule A, was
published on four consecutive Thursdays in the Drum and was posted
up on the 16th day of August, 1974, in each of six public places in
the neighbourhood of the road to be closed;

AND WHEREAS on the advertised day of September 24th at 7:30 p.m., the
Council of the Town of Inuvik being duly assembled to hear in person
or agent any person who claims that his land will be prejudicially
or injuriously affected by this By-Law, no such person or agent
applied to be heard;

NOW THEREFORE BE IT RESOLVED that the Council of the Town of Inuvik, in
session duly assembled enacts as follows:

- 1) All that portion of the road allowance in Block FIFTY-EIGHT (58)
Plan 636 and described as follows:
The surveyed road allowance located between LOTS ONE (1) AND TWO(2)
and LOTS THREE (3) AND FOUR (4) is hereby closed as a road allow-
ance.
- 2) This By-Law shall come into effect upon the approval of the Comm-
issioner and the day of final passing thereof.

READ A FIRST TIME this 24th day of September, 1974, A.D.

READ A SECOND TIME this 24th day of September, 1974, A.D.

Mayor



Secretary - Manager



Approved by the D/Commissioner of the Northwest Territories this
24th day of October 1974, A.D.

Herbert L. Parker
D/Commissioner

READ A THIRD TIME AND FINALLY PASSED by with the unanimous consent of t
members of Council present this 12th day of November 1974, A.D.

John R. Webster
Mayor

Barbara J. Morgan
Secretary - Manager

BY-LAW 259

SCHEDULE A

TOWN OF INUVIK
PUBLIC NOTICE

THE TOWN OF INUVIK PROPOSES BY BY-LAW TO CLOSE THE ROAD ALLOW-
ANCE LOCATED BETWEEN LOTS 1 AND 2, AND LOTS 3 AND 4 IN BLOCK 58.

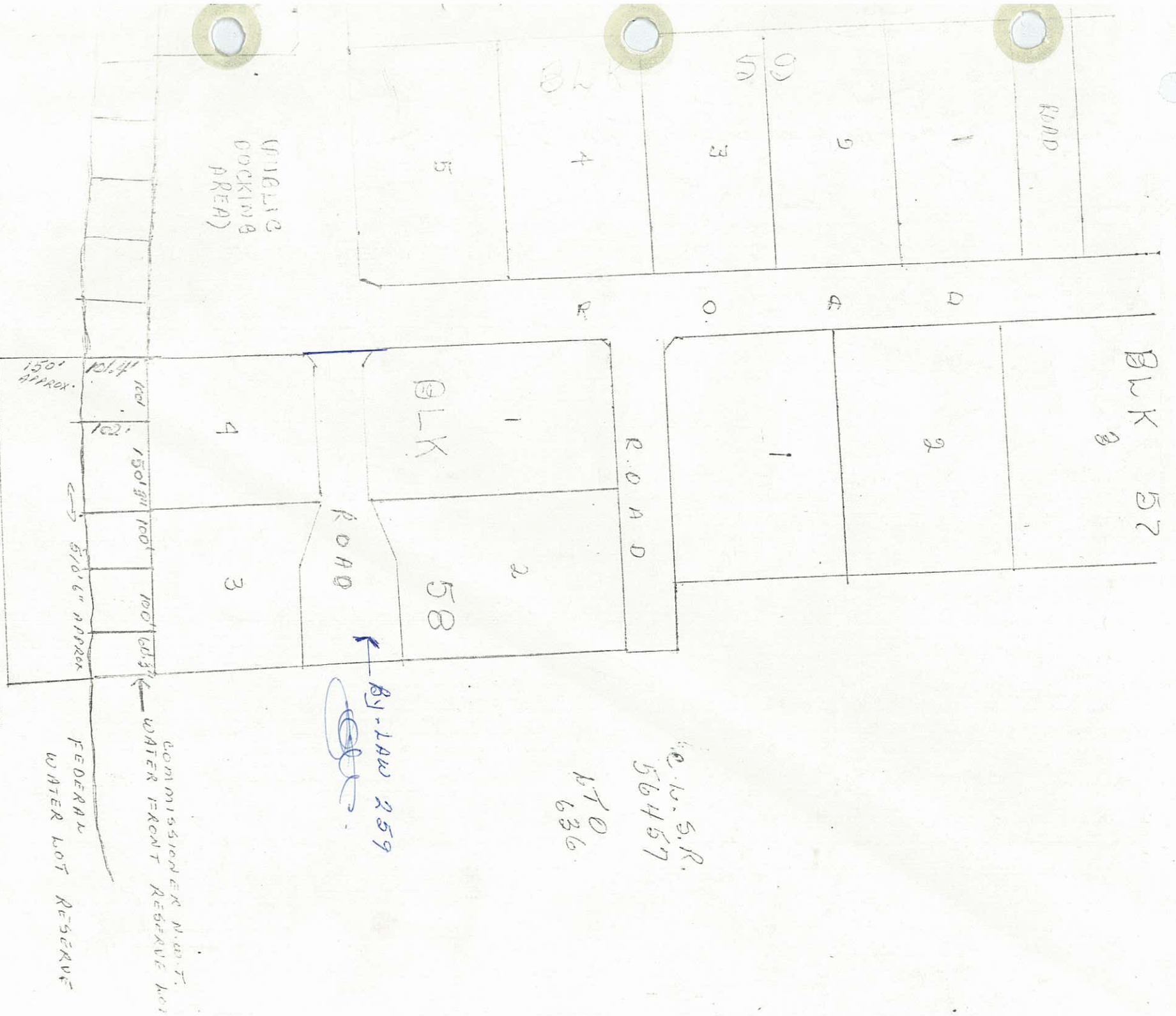
PERSONS OR AGENTS OF PERSONS CONCERNED BY THIS PROPOSAL MAY IN-
SPECT THE BY-LAW AT THE TOWN OFFICE DURING BUSINESS HOURS, AND
IF THEY SO DESIRE, MAY APPEAR BEFORE COUNCIL AND BE HEARD IN THE
INUVIK RESEARCH LAB CONFERENCE ROOM ON SEPTEMBER 24TH, 1974 AT
7:30 PM.

DATED IN INUVIK THIS 16TH DAY OF AUGUST, 1974.

OFFICE OF THE SECRETARY-MANAGER
TOWN OF INUVIK
BOX 1160
INUVIK, N.W.T.



Mackenzie River



Co. W. S.R.
56457
PTO
636

By-LAW 259

DOKING
AREA

DOKING

BLK 57

BLK

58

ROAD

ROAD

COMMISSIONER N.W.T.
WATER FRONT RESERVE LOT
FEDERAL
WATER LOT RESERVE

5/8" APPROX

150' APPROX

100'

100'

100'

100'

100'

100'

100'

100'

100'

100'

4

3

1

2

1

2

1

2

3

4

5

OD

3

BLK

4

DOKING

1

2

3

4

5

DOKING
AREA

BLK 57

BLK

58

ROAD

ROAD

COMMISSIONER N.W.T.
WATER FRONT RESERVE LOT
FEDERAL
WATER LOT RESERVE

5/8" APPROX

150' APPROX

100'

100'

100'

100'

100'

100'

100'

100'

100'

100'

4

3

1

2

1

2

1

2

3

4

5

OD

3

BLK

4

DOKING

1

2

3

4

5

DOKING
AREA

BLK 57

BLK

58

ROAD

ROAD

COMMISSIONER N.W.T.
WATER FRONT RESERVE LOT
FEDERAL
WATER LOT RESERVE

5/8" APPROX

150' APPROX

100'

100'

100'

100'

100'

100'

100'

100'

100'

100'

4

3

1

2

1

2

1

2

3

4

5

OD

3

BLK

4

DOKING

1

2

3

4

5

DOKING
AREA

BLK 57

BLK

58

ROAD

ROAD

COMMISSIONER N.W.T.
WATER FRONT RESERVE LOT
FEDERAL
WATER LOT RESERVE

5/8" APPROX

150' APPROX

100'

100'

100'

100'

100'

100'

100'

100'

100'

100'

4

3

1

2

1

2

1

2

3

4

5

OD

3

BLK

4

DOKING

1

2

3

4

5

DOKING
AREA

BLK 57

BLK

58

ROAD

ROAD

COMMISSIONER N.W.T.
WATER FRONT RESERVE LOT
FEDERAL
WATER LOT RESERVE

5/8" APPROX

150' APPROX

100'

100'

100'

100'

100'

100'

100'

100'

100'

100'

4

3

1

2

1

2

1

2

3

4

5

OD

3

BLK

4

DOKING

1

2

3

4

5

DOKING
AREA

BLK 57

BLK

58

ROAD

ROAD

COMMISSIONER N.W.T.
WATER FRONT RESERVE LOT
FEDERAL
WATER LOT RESERVE

5/8" APPROX

150' APPROX

100'

100'

100'

100'

100'

100'

100'

100'

100'

100'

4

3

1

2

1

2

1

2

3

4

5

OD

3

BLK

4

DOKING

1

2

3

4

5

DOKING
AREA

BLK 57

BLK

58

ROAD

ROAD

COMMISSIONER N.W.T.
WATER FRONT RESERVE LOT
FEDERAL
WATER LOT RESERVE

5/8" APPROX

150' APPROX

100'

100'

100'

100'

100'

100'

100'

100'

100'

100'

4

3

1

2

1

2

1

2

3

4

5

OD

3

BLK

4

DOKING

1

2

3

4

5

DOKING
AREA

BLK 57

BLK

58

ROAD

ROAD

COMMISSIONER N.W.T.
WATER FRONT RESERVE LOT
FEDERAL
WATER LOT RESERVE

5/8" APPROX

150' APPROX

100'

100'

100'

100'

100'

100'

100'

100'

100'

100'

4

3

1

2

1

2

1

2

3

4

<